



PROJECT: ECOLOGICAL AND INNOVATIVE TECHNOLOGIES FOR RECOVERING
INDUSTRIAL AREAS FROM LCA AND ENERGY EFFICIENCY POINT OF VIEW

2020-1-RO01-KA203-080223

THE USE OF 2D DOCUMENTATION FOR THE 3D INVENTORY OF BUILDING



This work is licensed under a [Creative Commons Attribution-ShareAlike 4.0 International License](https://creativecommons.org/licenses/by-sa/4.0/).

"The European Commission's support for the production of this publication does not constitute an endorsement of the contents, which reflect the views only of the authors, and the Commission cannot be held responsible for any use which may be made of the information contained therein".



Universitatea
Transilvania
din Braşov



ROMANIA
GREEN
BUILDING
COUNCIL



Co-funded by the
Erasmus+ Programme
of the European Union





1. Scanning of drawing documentation
2. Photographs
3. Graphic correction
4. Import of scans as trace reference
5. Using the trace reference

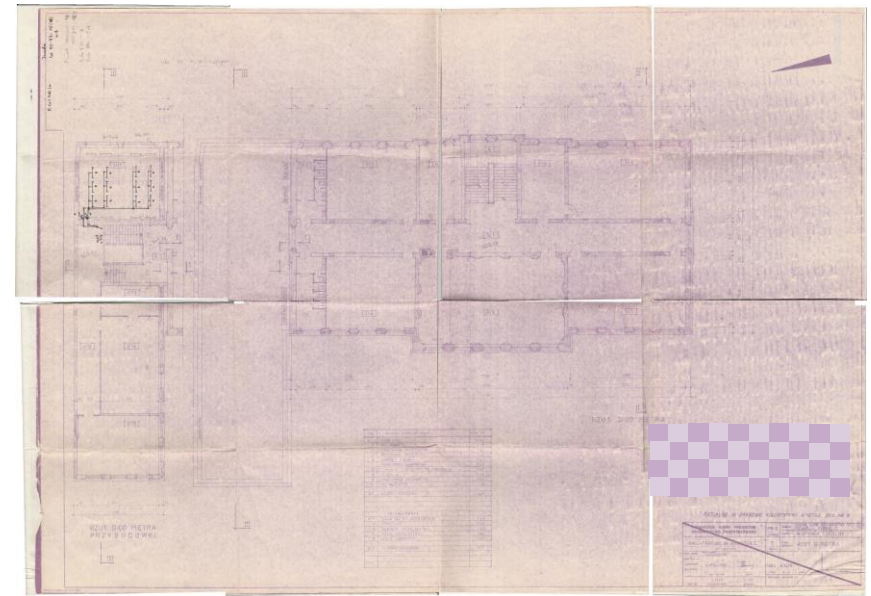
1. Scanning of drawing documentation

scan the old documentation

if there is a problem with scanning a large format sheet of paper

you can scan a smaller format

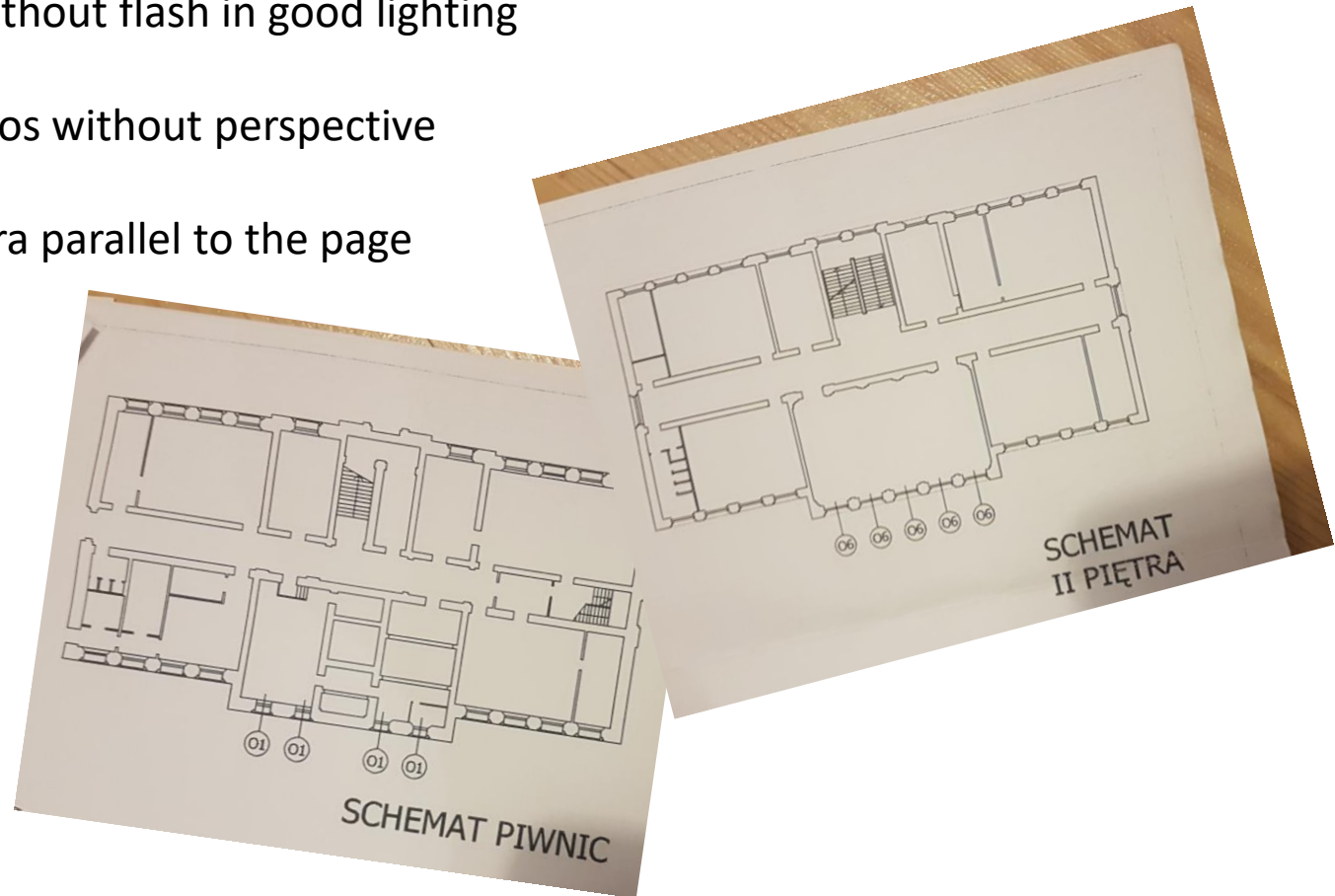
and put the images together in a graphics editing program



2. Photographs

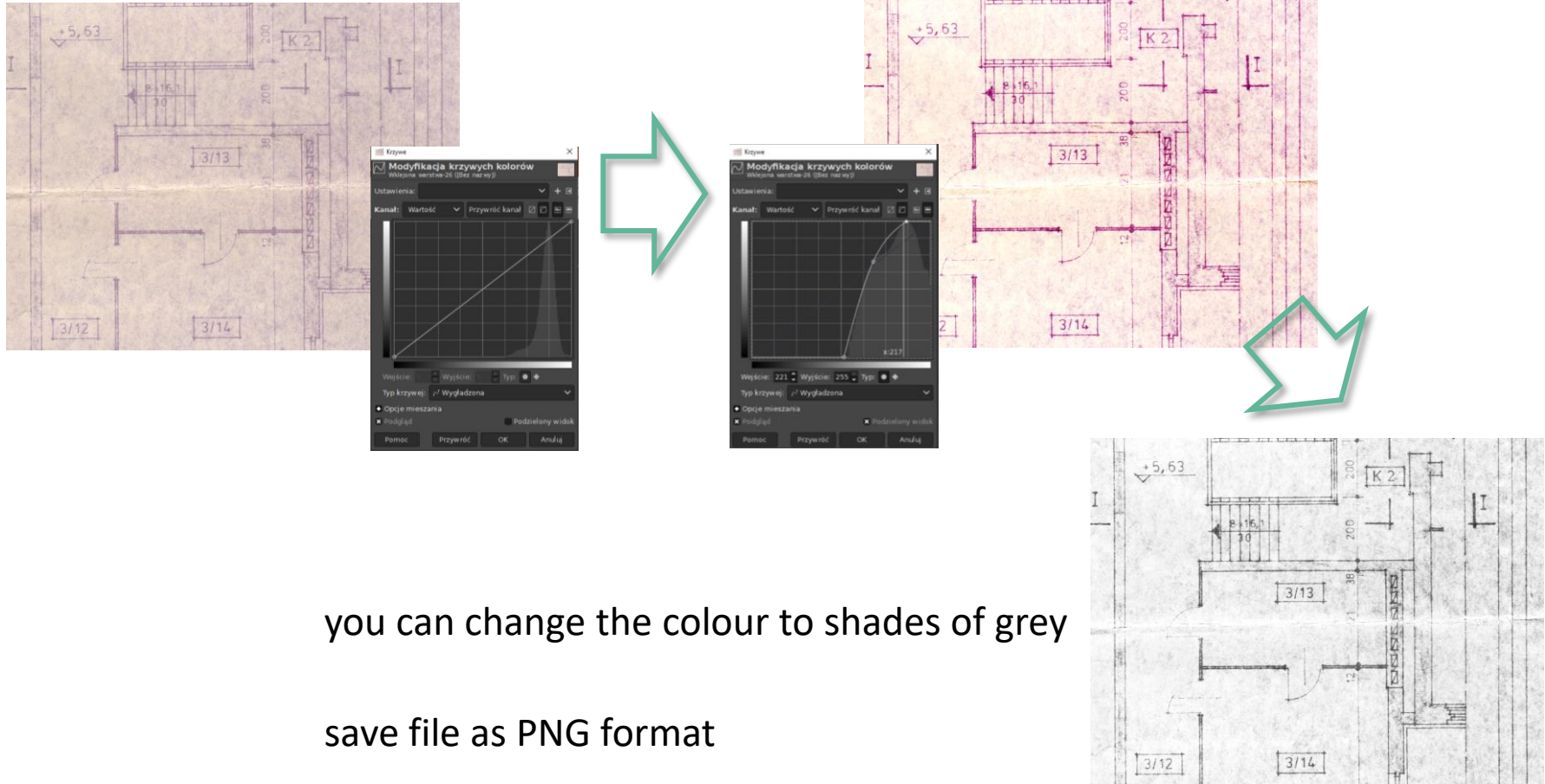
take pictures of the documentation or small schemes

- take pictures without flash in good lighting
- try to take photos without perspective
- place the camera parallel to the page



3. Graphic correction

modify the colour curve settings to improve brightness and contrast

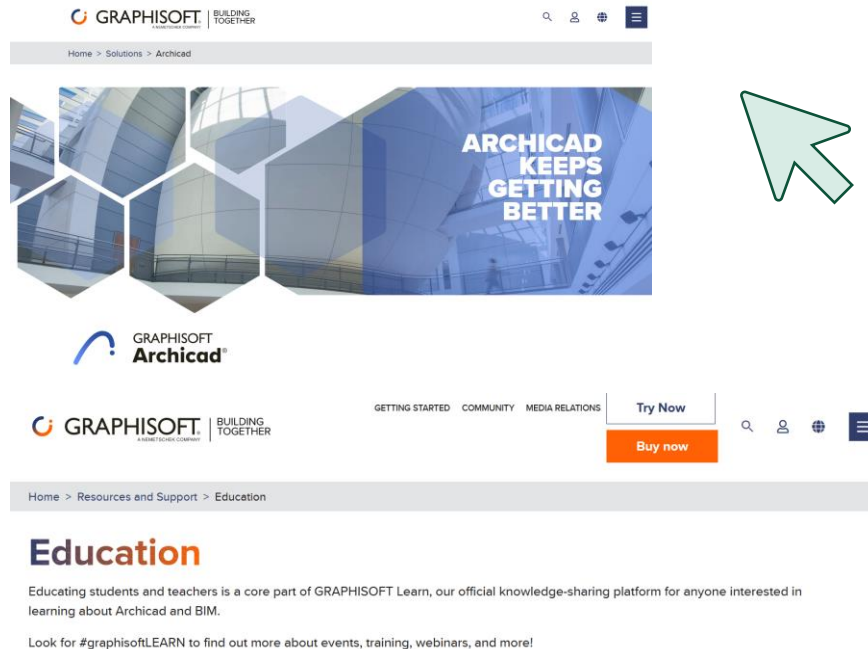


you can change the colour to shades of grey

save file as PNG format

Download and install Graphisoft Archicad

Information about Archicad:



The screenshot shows the Graphisoft Archicad website. The top navigation bar includes the Graphisoft logo, the tagline 'BUILDING TOGETHER', and links for search, user profile, and global settings. Below the navigation bar is a breadcrumb trail: 'Home > Solutions > Archicad'. The main content area features a large blue banner with the text 'ARCHICAD KEEPS GETTING BETTER' and a green mouse cursor pointing at it. Below the banner is the Archicad logo. The bottom section of the page is titled 'Education' and contains text about Graphisoft Learn, a knowledge-sharing platform for BIM. A green mouse cursor is also pointing at the 'Education' section. The bottom navigation bar includes links for 'GETTING STARTED', 'COMMUNITY', 'MEDIA RELATIONS', and a 'Try Now' button with a 'Buy now' link below it.

Get your free educational licence here:

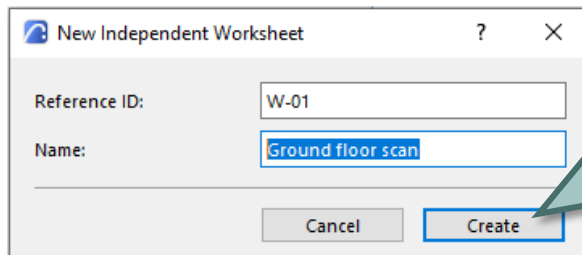
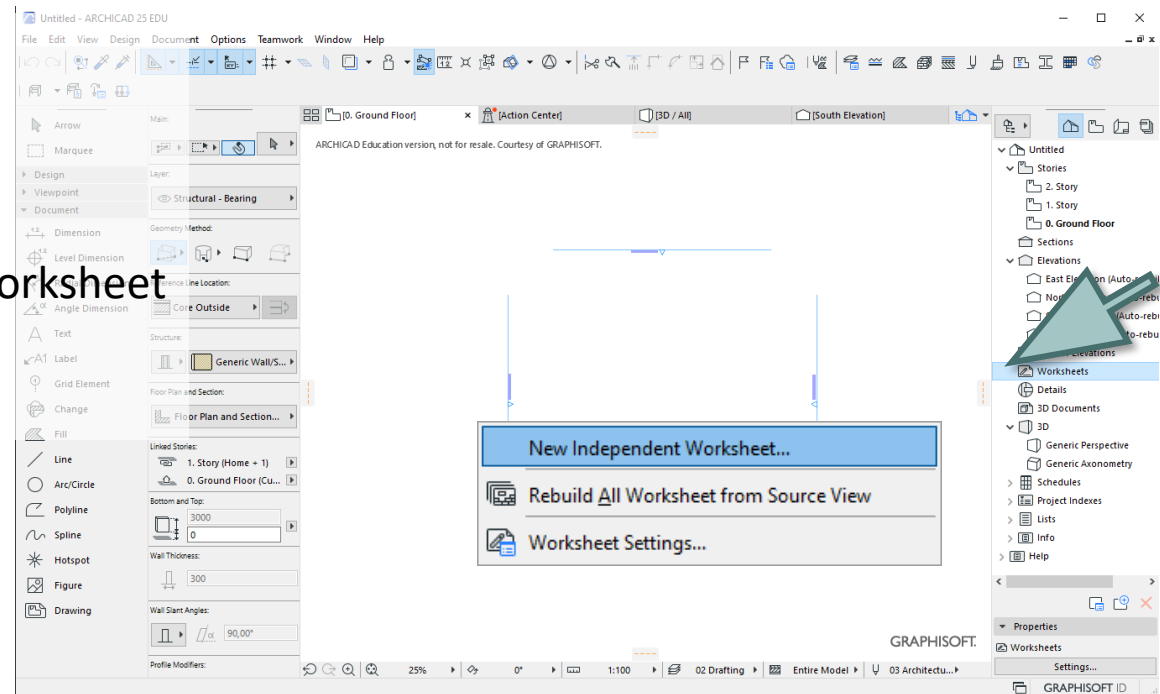


Open Graphisoft Archicad

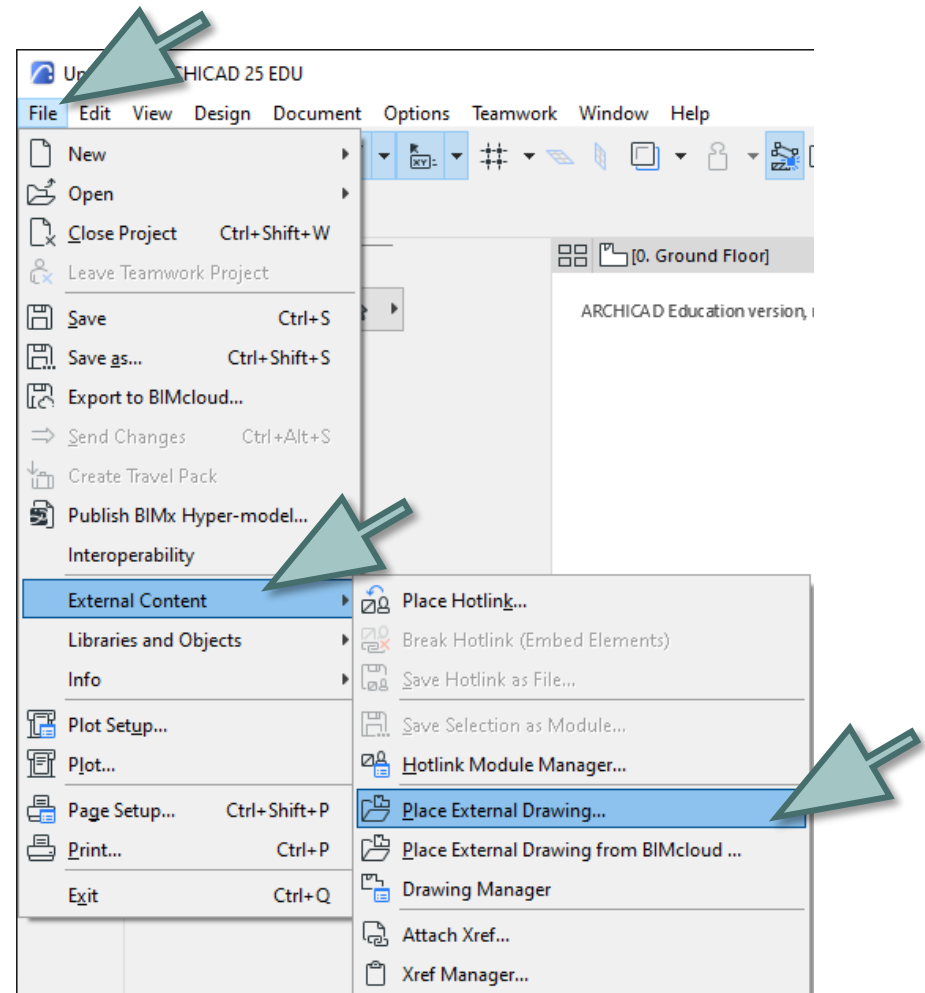


4. Import of scans as trace reference

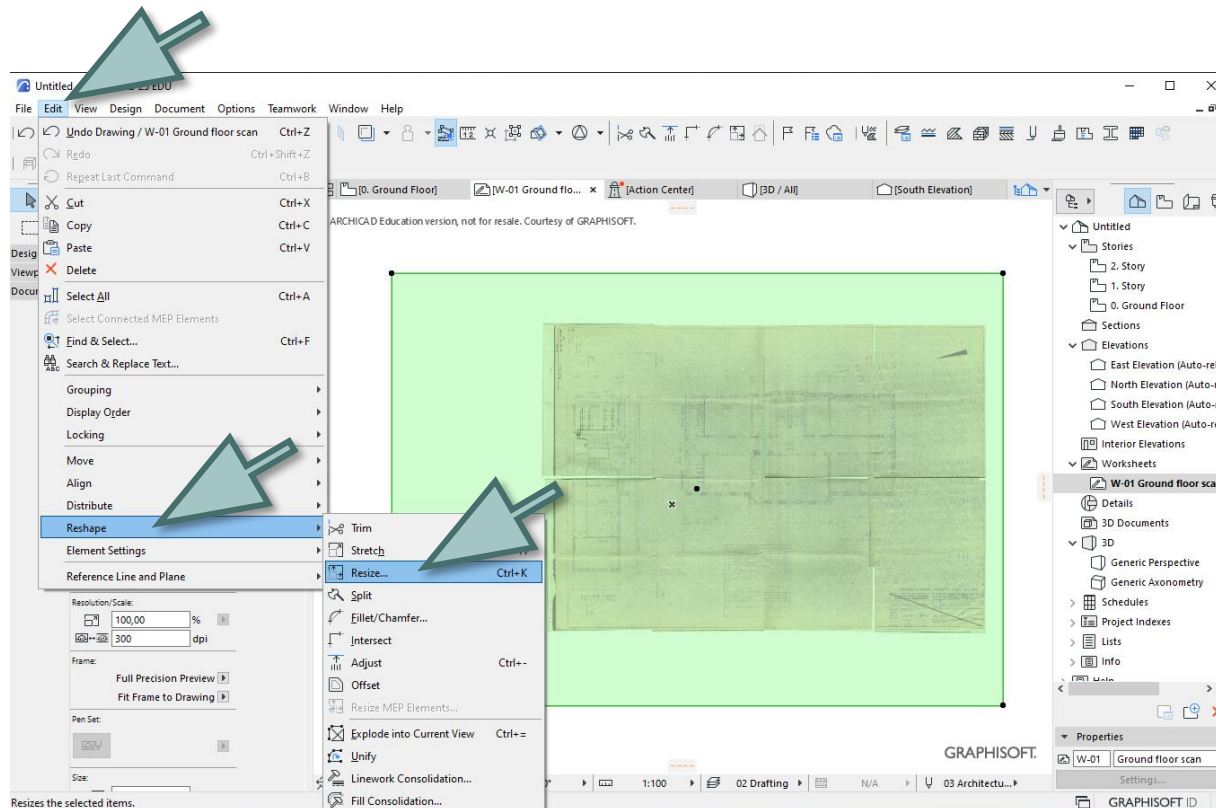
- open new file in Archicad
- right click on „Worksheet”
- create New Independent Worksheet
- enter a drawing name



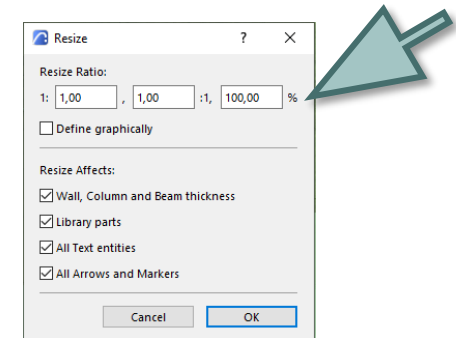
- open the new Worksheet
- import PNG drawing



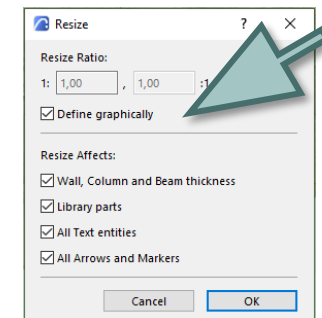
- scale using dimensioning on the drawing



- You can use the ratio

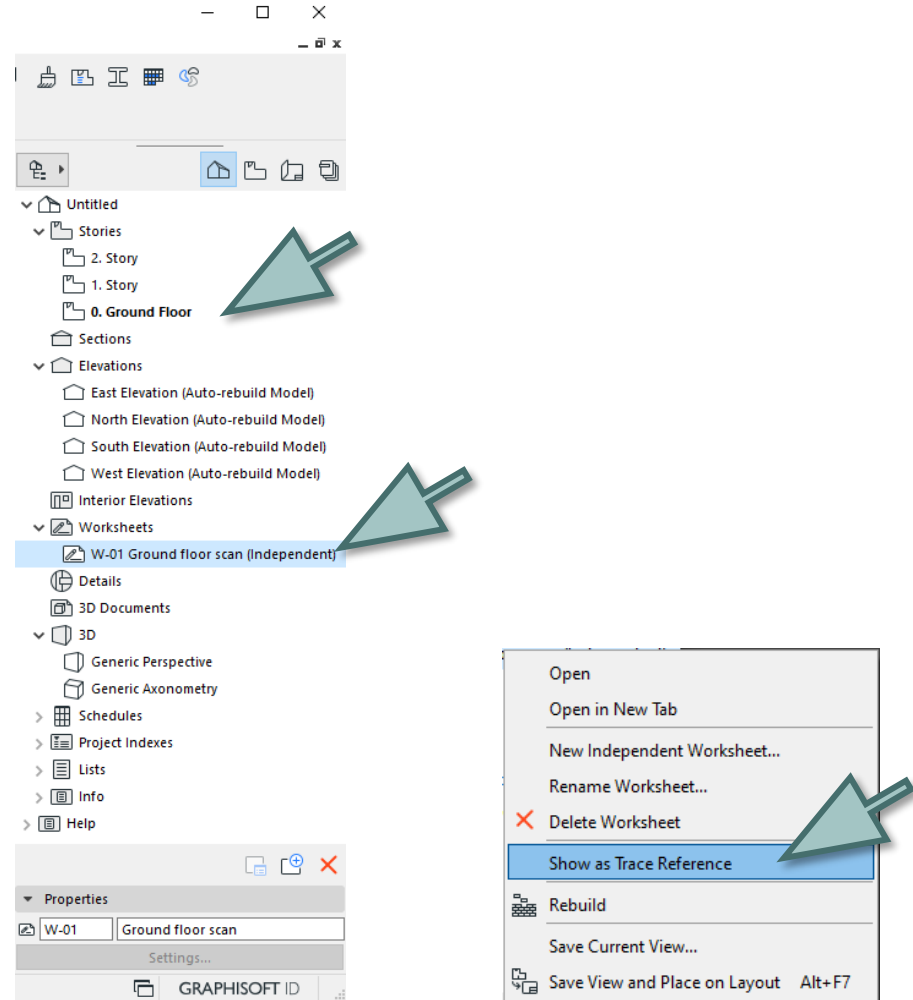


- or define graphically

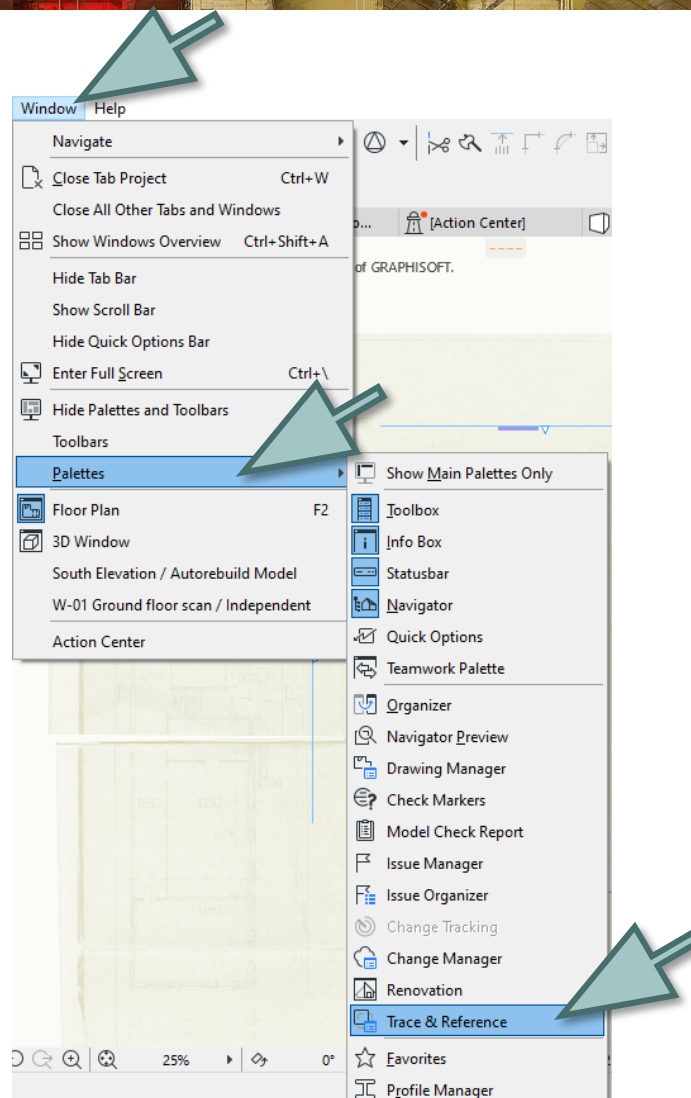


5. Using the trace reference

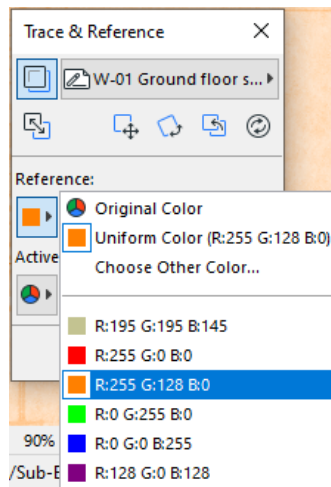
- open the story level
- right click on Worksheet
- select „Show as Trace Reference”



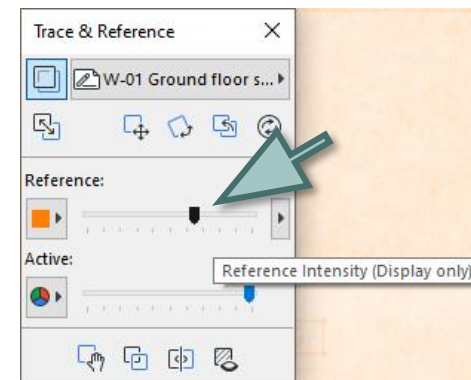
- open the Pallet of Trace & Reference



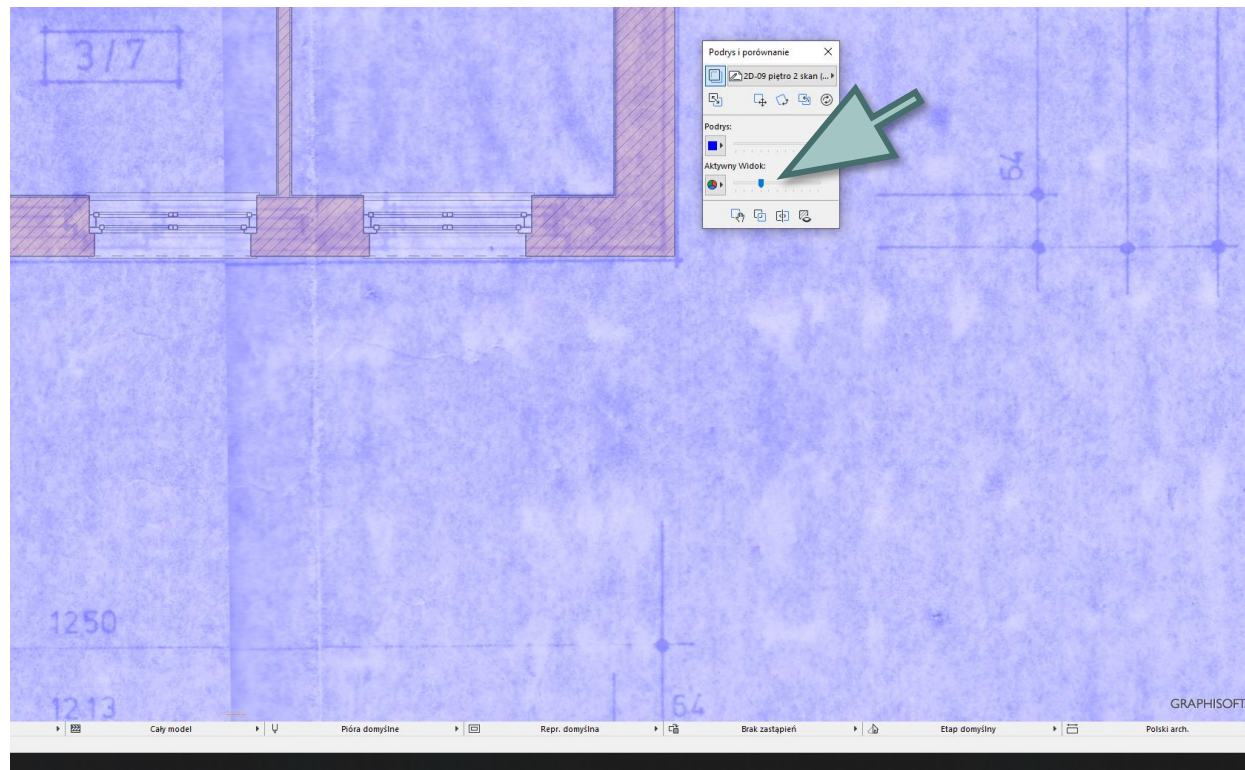
- You can change the colour of the drawing



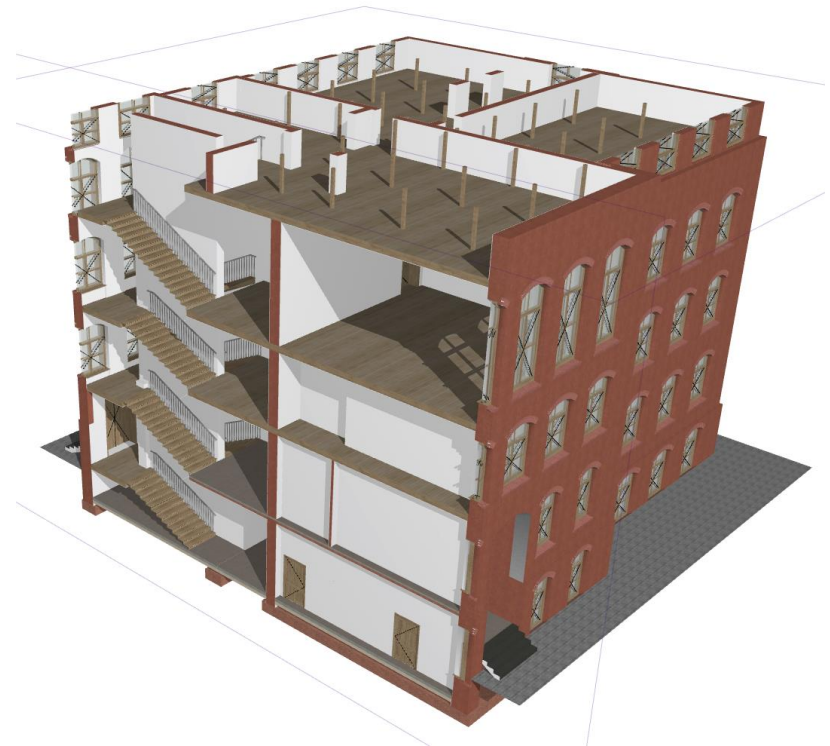
and transparency of the drawing



You can also change the transparency of the model



- you can prepare multiple trace references - for each plan, section and elevation
- you can use the underlay drawings for 3D modeling





ECOLOGICAL AND INNOVATIVE TECHNOLOGIES FOR RECOVERING INDUSTRIAL AREAS FROM LCA AND ENERGY EFFICIENCY POINT OF VIEW 2020-1-RO01-KA203-080223

CONTACT

www.recoverind.eu



Erasmus+