



PROJECT: ECOLOGICAL AND INNOVATIVE TECHNOLOGIES FOR RECOVERING
INDUSTRIAL AREAS FROM LCA AND ENERGY EFFICIENCY POINT OF VIEW
2020-1-RO01-KA203-080223

THE USE OF 3D SCANNING FOR THE INVENTORY OF BUILDING



This work is licensed under a [Creative Commons Attribution-ShareAlike 4.0 International License](https://creativecommons.org/licenses/by-sa/4.0/).

"The European Commission's support for the production of this publication does not constitute an endorsement of the contents, which reflect the views only of the authors, and the Commission cannot be held responsible for any use which may be made of the information contained therein".



Universitatea
Transilvania
din Braşov



ROMANIA
GREEN
BUILDING
COUNCIL



Co-funded by the
Erasmus+ Programme
of the European Union



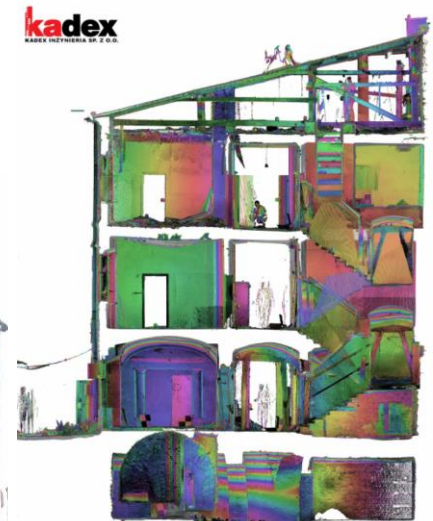
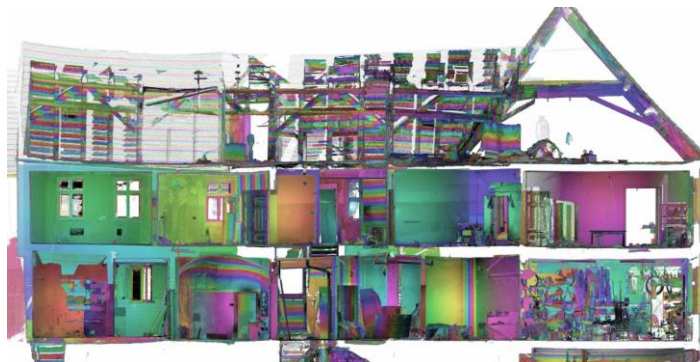
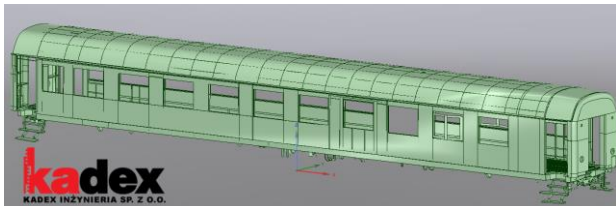


GENERAL CONTENT

1. Laser scanning of building
2. Outputs of scanning
3. Import point cloud
4. Point cloud editing
5. Export point cloud
6. Import point cloud to Revit
7. Scale and change position of point cloud
8. Use the point cloud for 3D modeling
9. IFC export

Laser scanning

- Spatial
- 3D model
- Small amount of time



1. Laser scanning of building

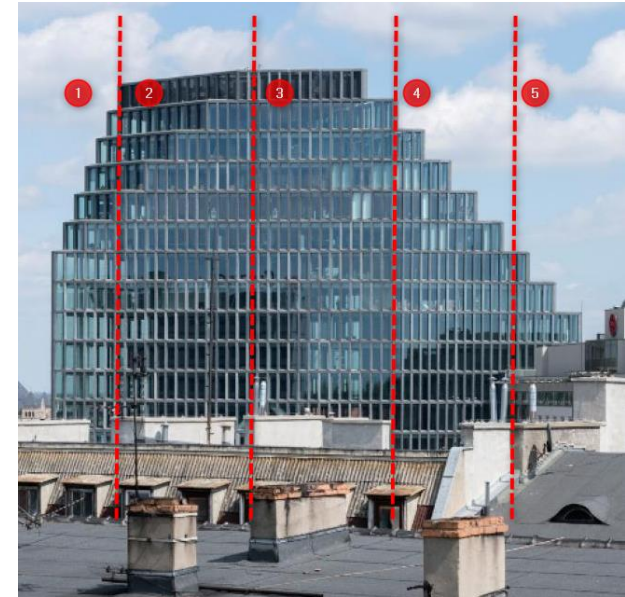
Scan the elevation of building from several different stations



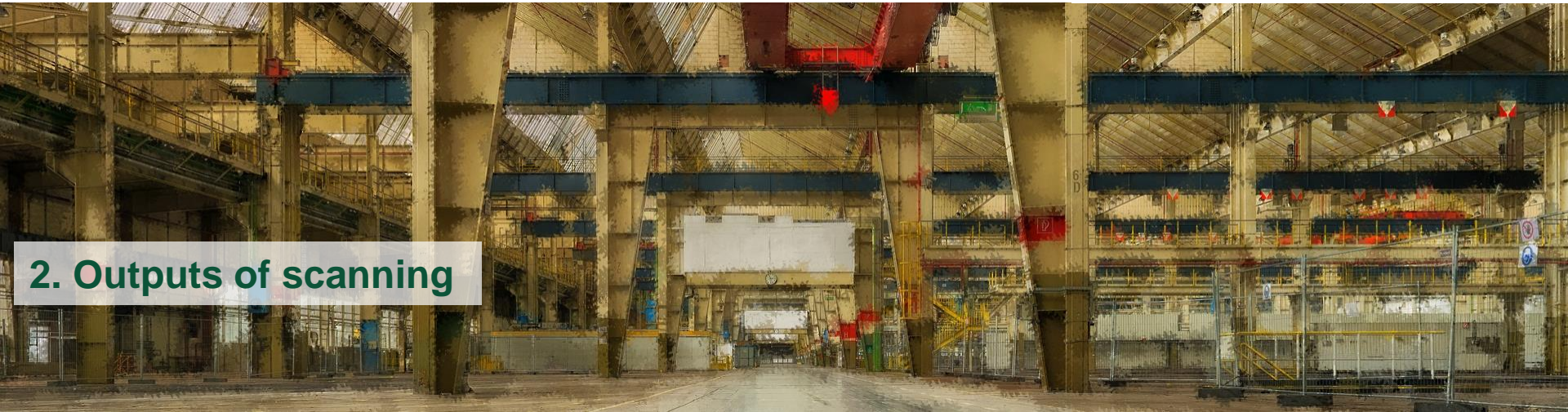
Why many different positions of scanner?







Shadow Elimination

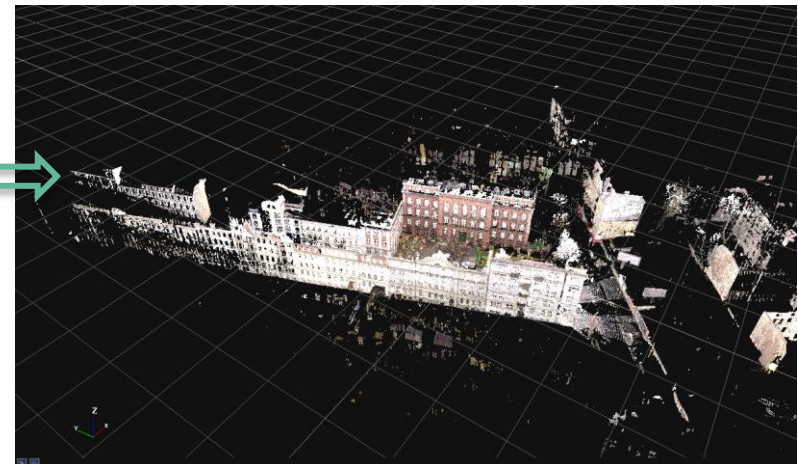
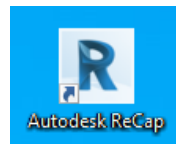
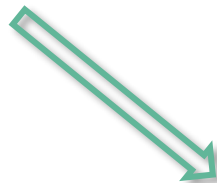


In case of bigger building
a numerous of scanning stations
might be required to inventor
a whole building



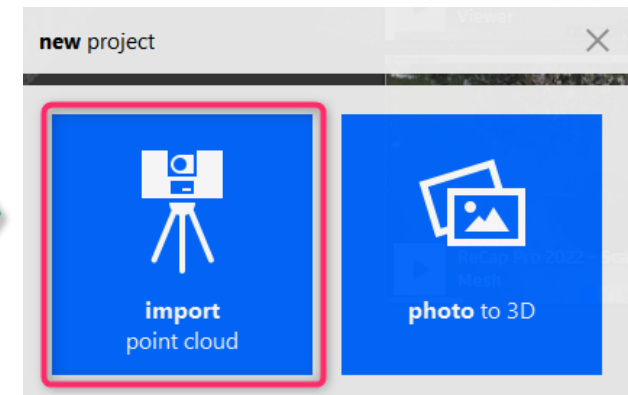
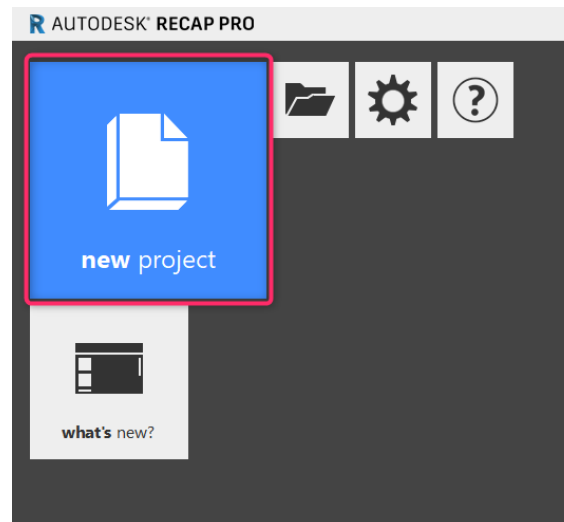
2. Outputs of scanning

	Rybaki.pod	18.01.2022 09:14	Plik POD	815 855 KB
	Rybaki.pts	18.01.2022 09:04	Plik PTS	3 167 507 KB
	Rybaki	13.01.2022 12:06	Autodesk ReCap Project file	2 980 KB
	Rybaki_1.e57	18.01.2022 09:16	Plik E57	2 738 182 KB

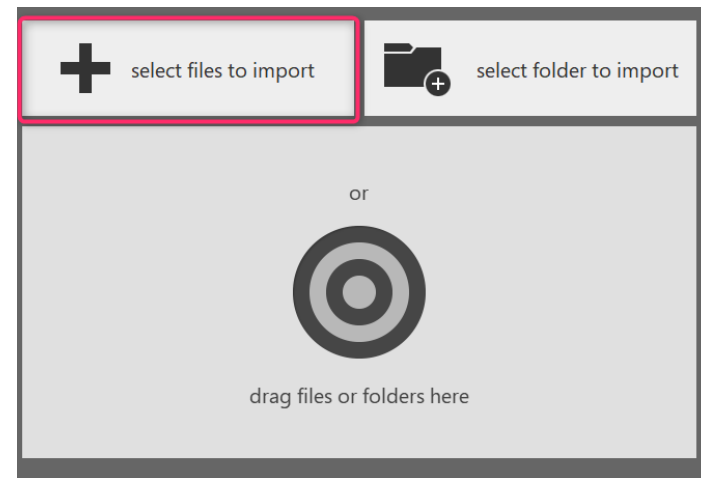
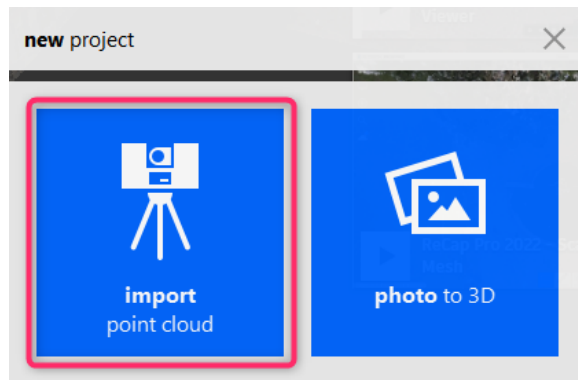






3. Import point cloud

How to open file *.e57 using Autodesk ReCap software ?

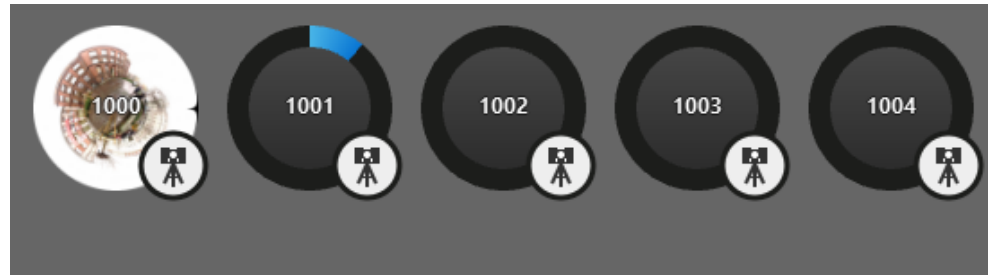


How to open file *.e57 using Autodesk ReCap software ?

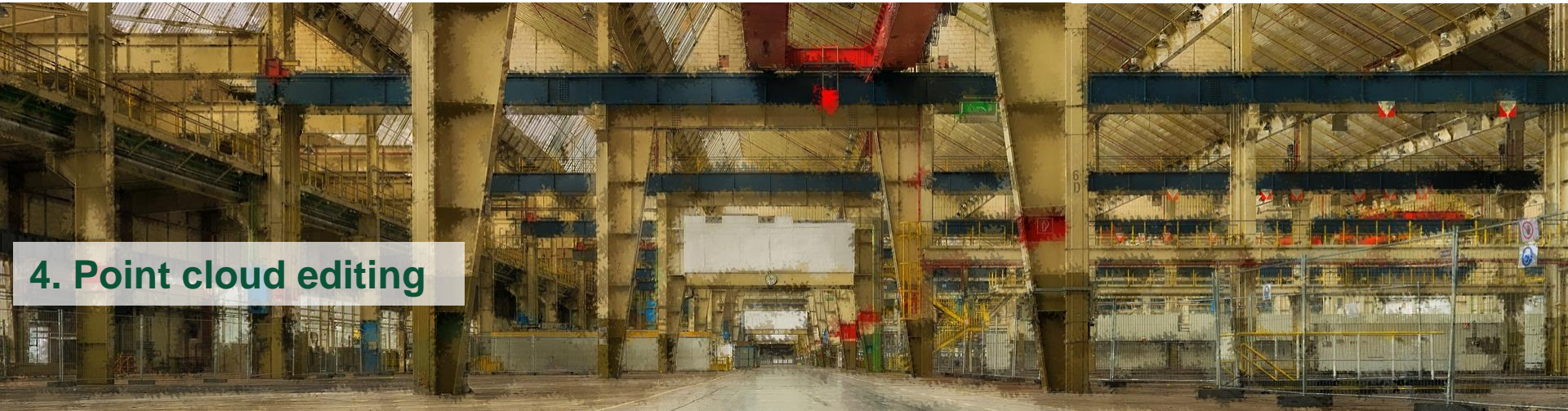


	Rybaki.pod	18.01.2022 09:14	Plik POD	815 855 KB
	Rybaki.pts	18.01.2022 09:04	Plik PTS	3 167 507 KB
	Rybaki	13.01.2022 12:06	Autodesk ReCap Project file	2 980 KB
	Rybaki_1.e57	18.01.2022 09:16	Plik E57	2 738 182 KB

How to open file *.e57 using Autodesk ReCap software ?

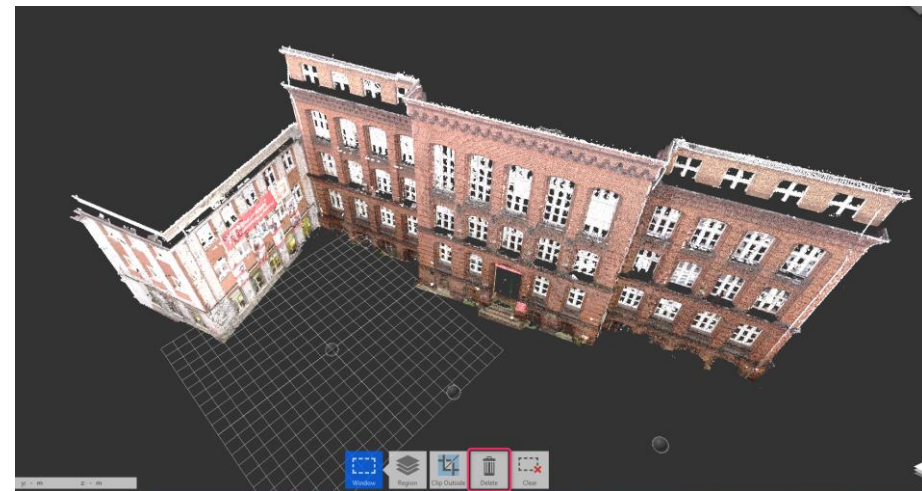
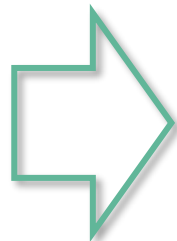
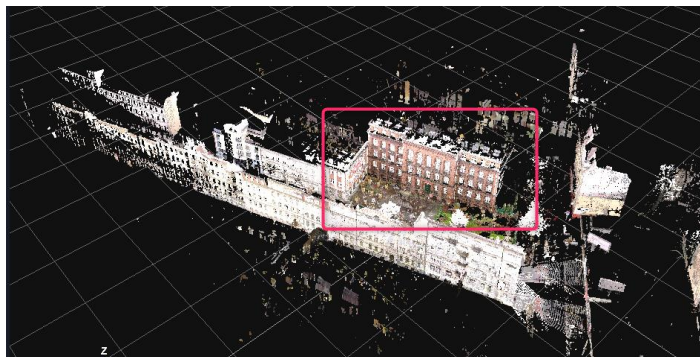


All 5 stations needs to be imported
– it can be time-consuming!



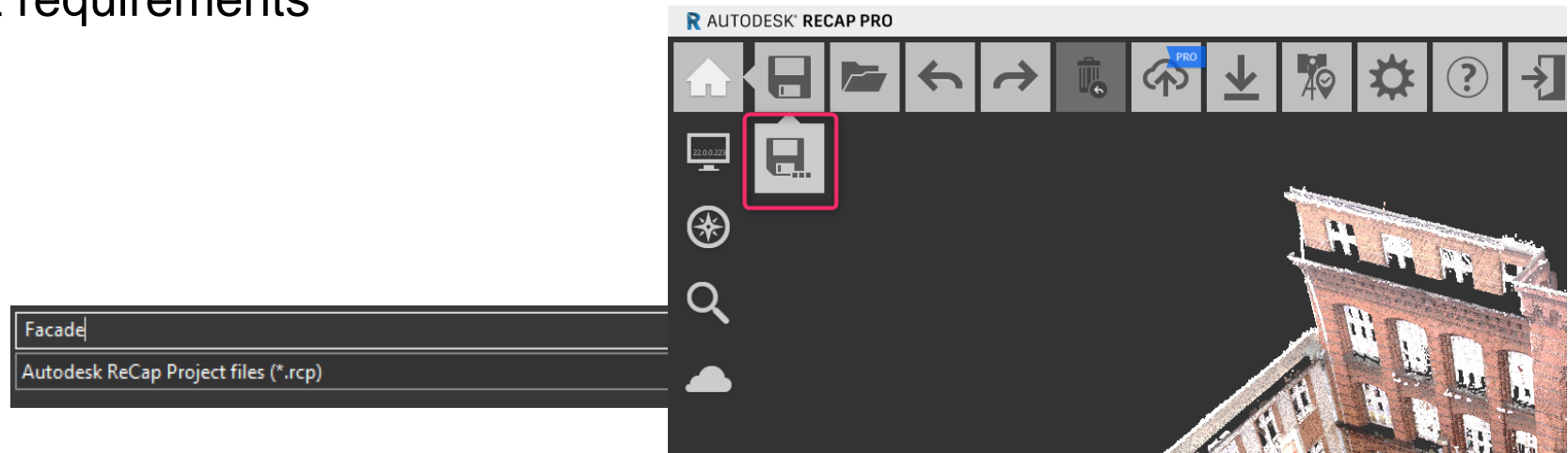
4. Point cloud editing

Data cloud to be edited.
All redundant points to be removed



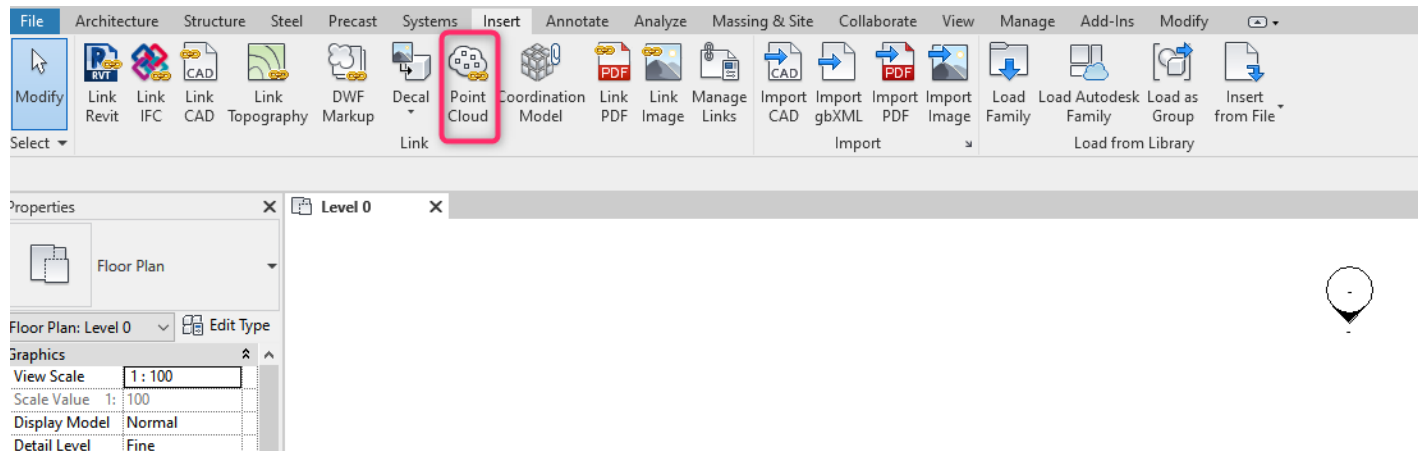
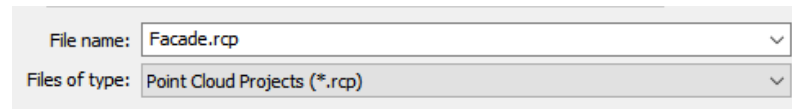
5. Export point cloud

Filed to be exported in line with Autodesk
Revit requirements

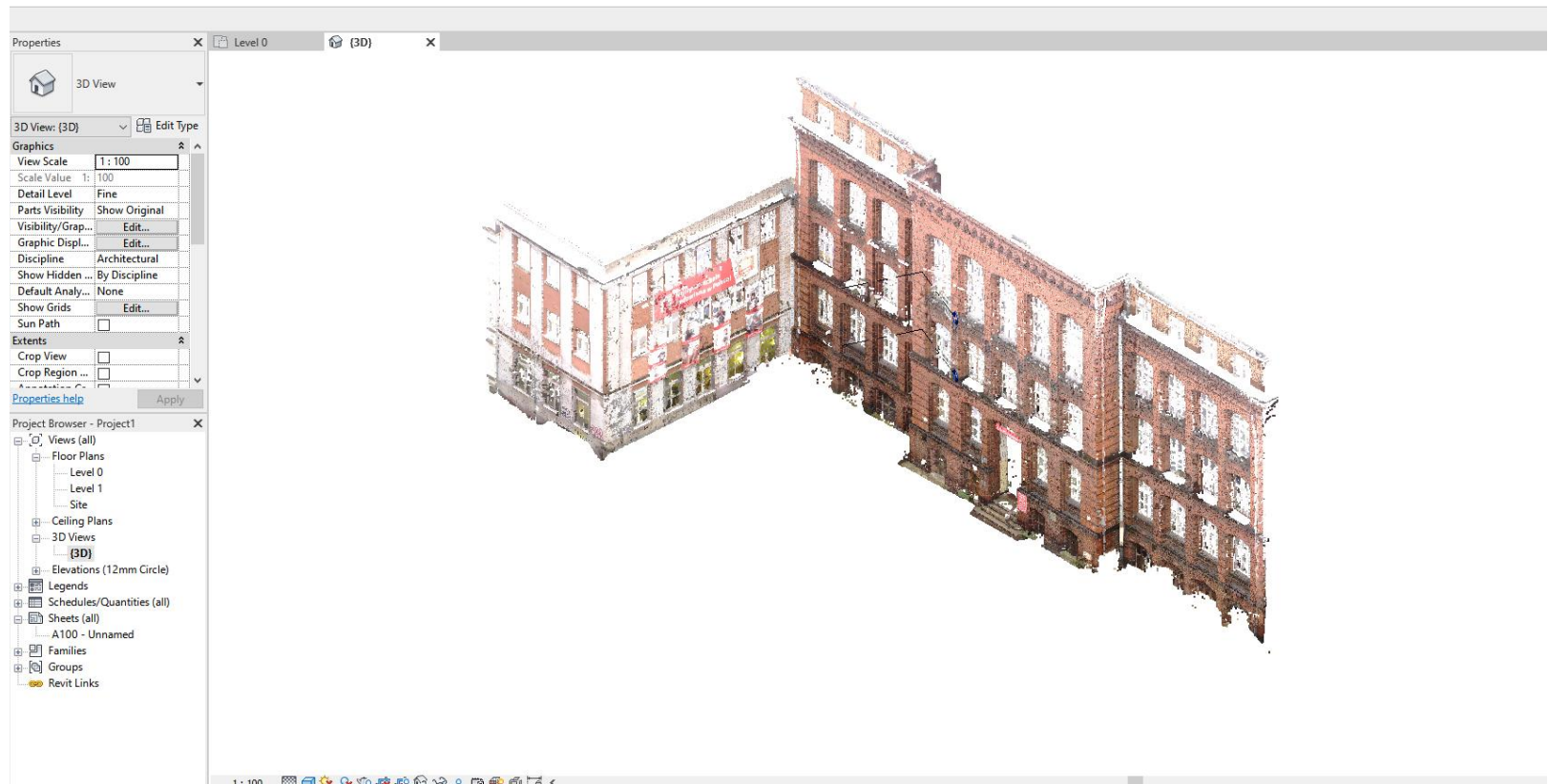


6. Import point cloud to Revit

So prepared file can be imported
to Autodesk Revit software



So prepared file can be imported
to Autodesk Revit software

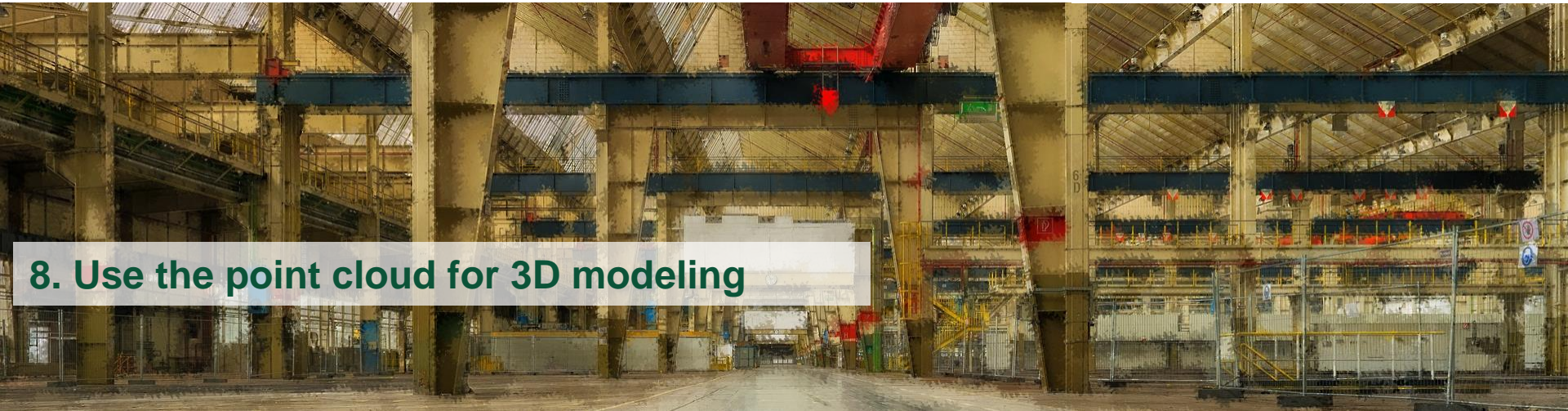


7. Scale and change position of point cloud

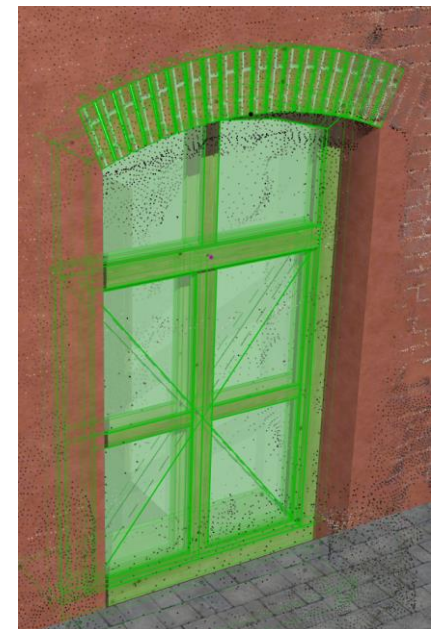
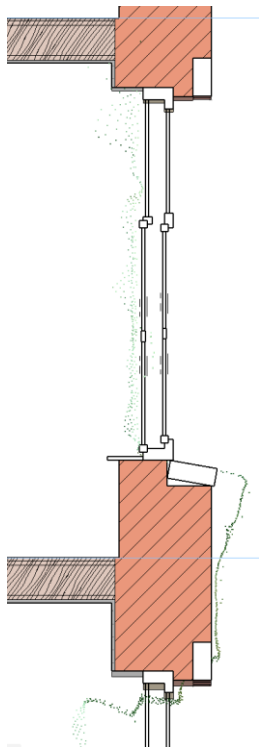
Point cloud to be suited to orthogonal
coordinate system and agreed grid lines

Note: Scaling of object can be required



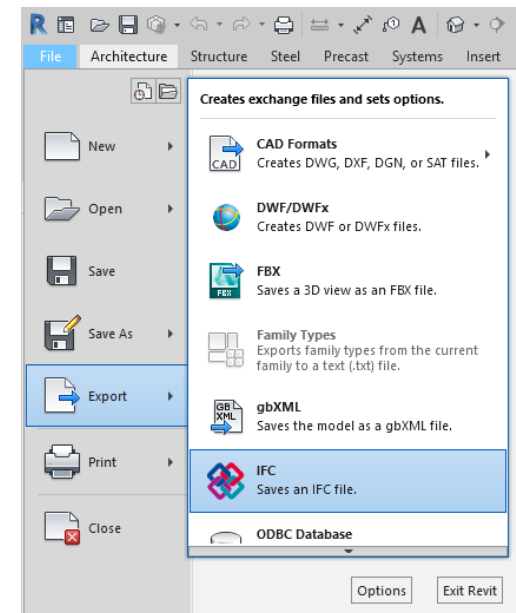


8. Use the point cloud for 3D modeling



9. IFC export

IFC model and documentation in other required formats can be made on the base of imported point cloud.





ECOLOGICAL AND INNOVATIVE TECHNOLOGIES FOR RECOVERING INDUSTRIAL AREAS FROM LCA AND ENERGY EFFICIENCY POINT OF VIEW 2020-1-RO01-KA203-080223

CONTACT

www.recoverind.eu



Erasmus+